

National Radiology Data Registry

Physician Report, 2021 Jan-Jun

Sample facility
(Facility ID: 100853)



nrdr.acr.org



This page is intentionally blank.

CT Colonography Registry
Jan 2021 - Jun 2021
List of physicians at 100853

NPI	Physician name
994	Doctor Green
995	Doctor Black
996	Doctor White
997	Doctor Brown
998	Doctor Gray

CT Colonography Registry
Jan 2021 - Jun 2021
Summary Report of N= 62 Total Cases

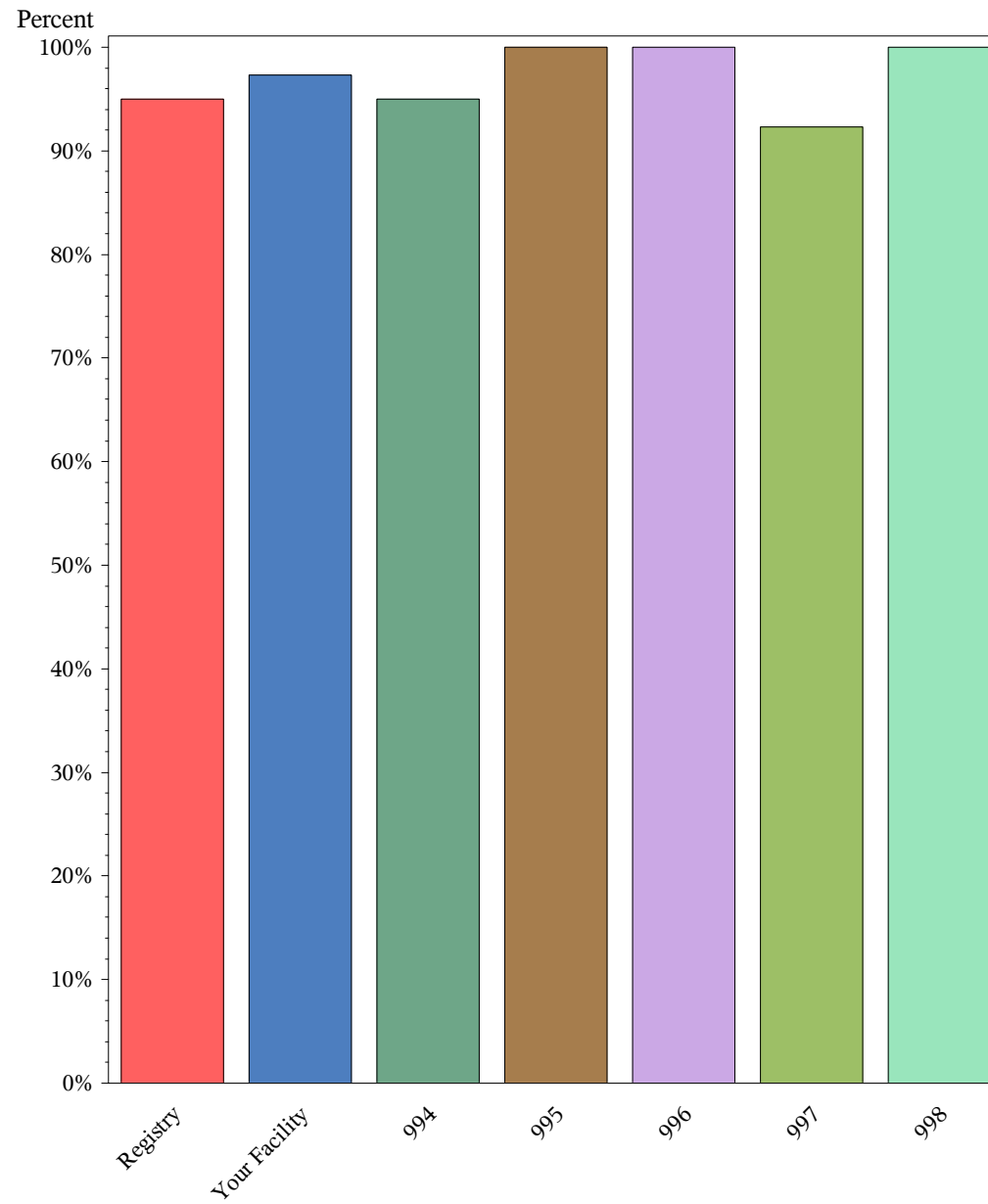
	994			995			996			997		
	Num ¹	Den ²	%	Num ¹	Den ²	%	Num ¹	Den ²	%	Num ¹	Den ²	%
Rate of Adequacy of Screening CTC Exam		0			0			0			0	
Rate of Adequacy of Diagnostic CTC Exam	18	18	100.0	11	11	100.0	10	10	100.0	14	14	100.0
Rate of Colonic Perforation	1	1	100.0		0			0			0	
True Positive Rate	0	5	0.0	0	5	0.0	0	1	0.0	0	4	0.0
Potentially Important Extracolonic Findings		0			0			0			0	

	998			Other facilities			Your facility 100853			Registry		
	Num ¹	Den ²	%	Num ¹	Den ²	%	Num ¹	Den ²	%	Num ¹	Den ²	%
Rate of Adequacy of Screening CTC Exam		0			0			0			0	
Rate of Adequacy of Diagnostic CTC Exam	6	6	100.0	286	286	100.0	59	59	100.0	345	345	100.0
Rate of Colonic Perforation		0		5	5	100.0	1	1	100.0	6	6	100.0
True Positive Rate	0	1	0.0	0	80	0.0	0	16	0.0	0	96	0.0
Potentially Important Extracolonic Findings		0			0			0			0	

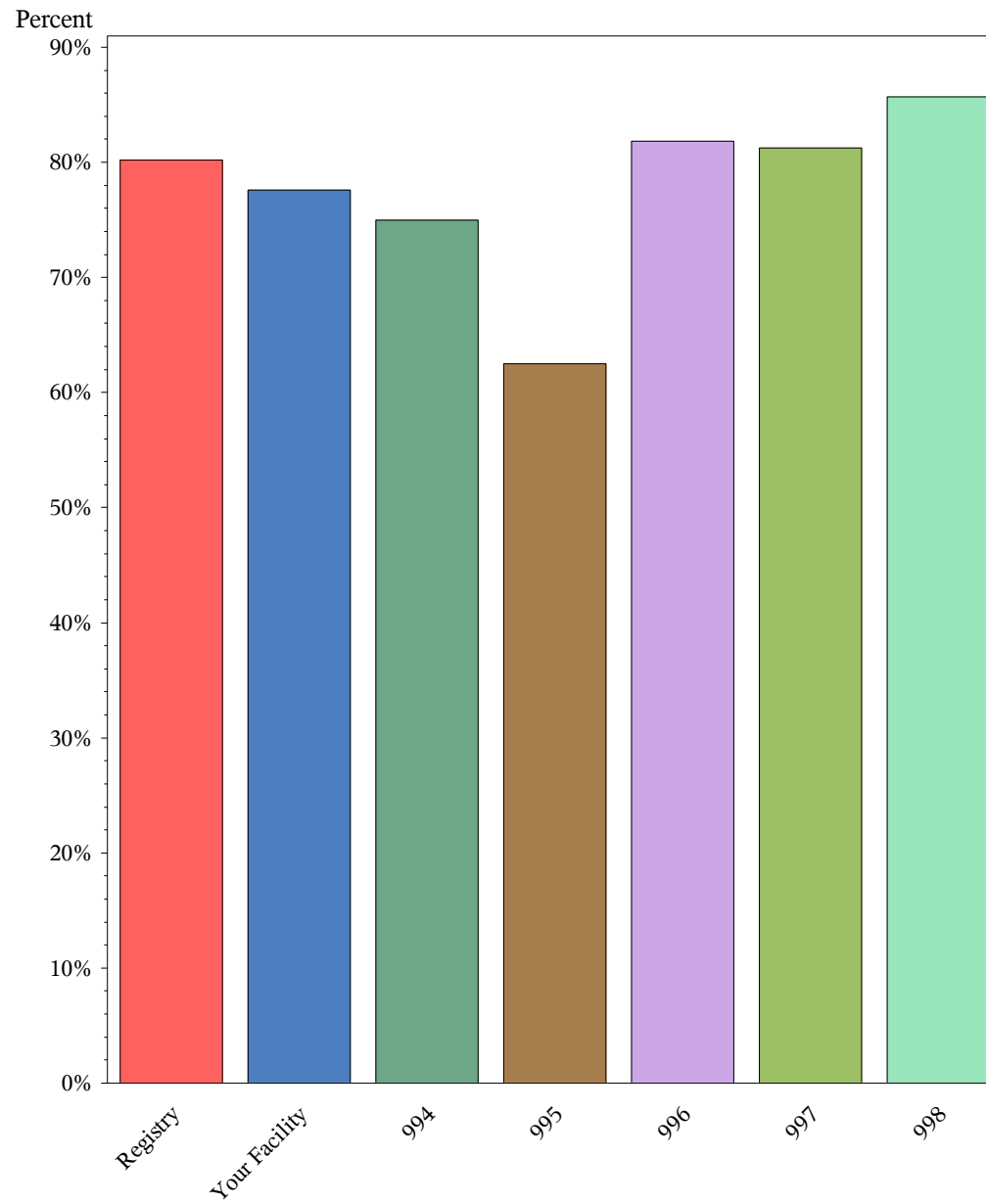
¹Num (Numerator): Instances

²Den (Denominator): Total number eligible for measure

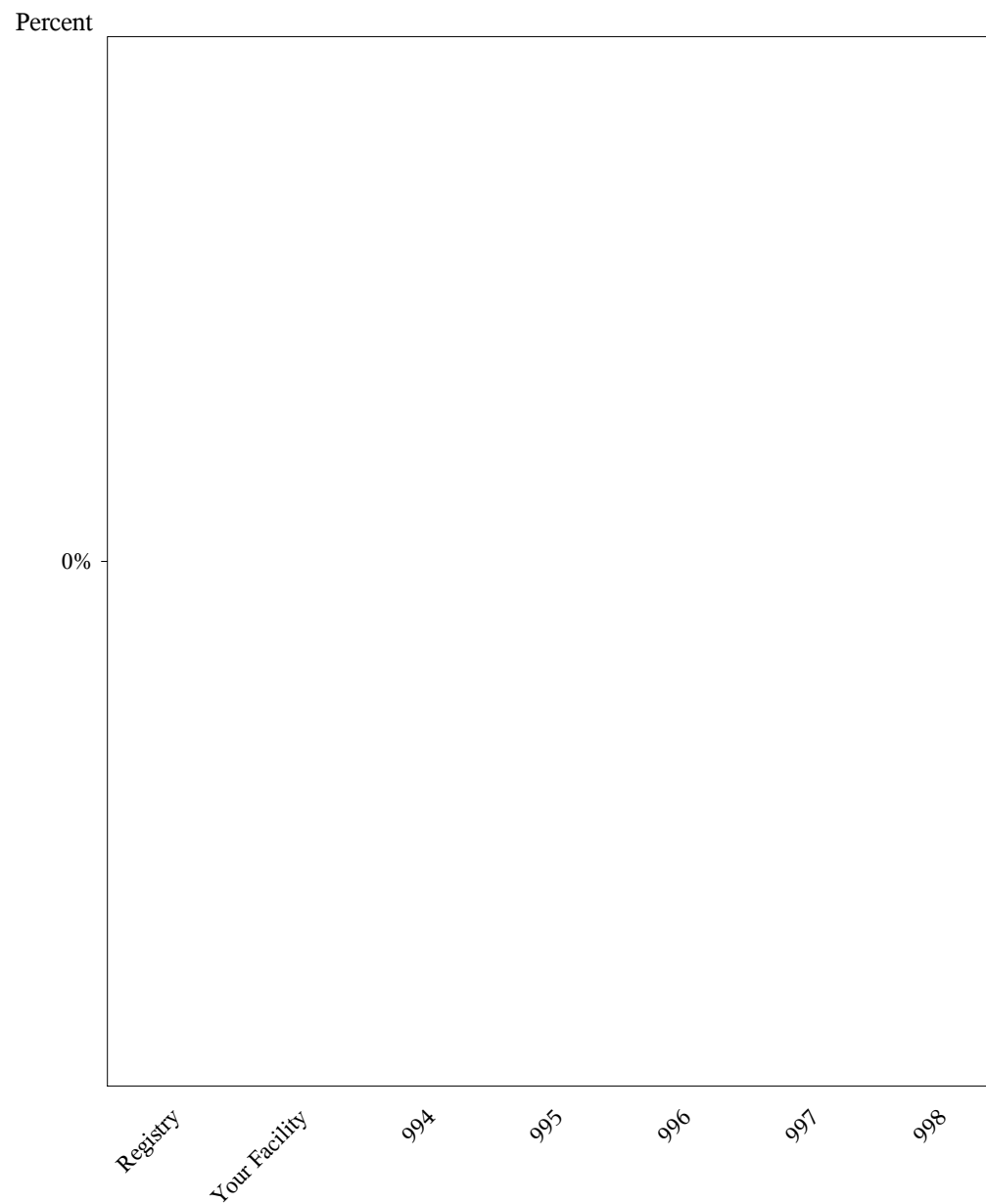
CT Colonography
Jan 2021 - Jun 2021
Rate of Adequacy of Screening CTC Exam



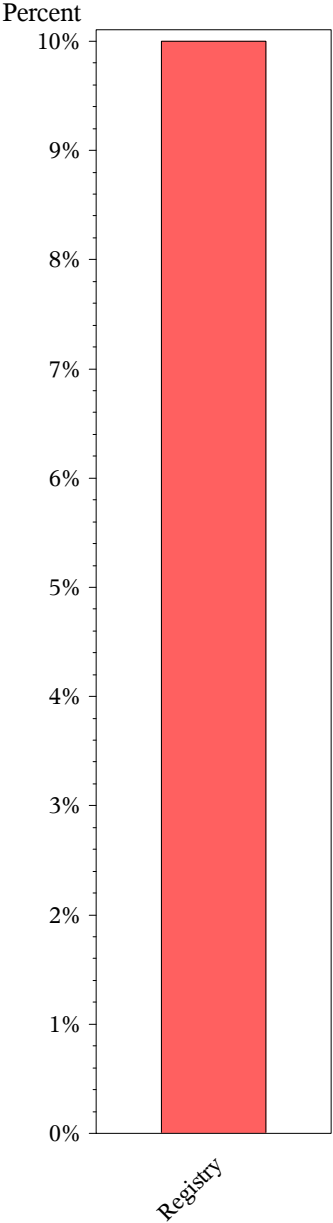
CT Colonography
Jan 2021 - Jun 2021
Rate of Adequacy of Diagnostic CTC Exam



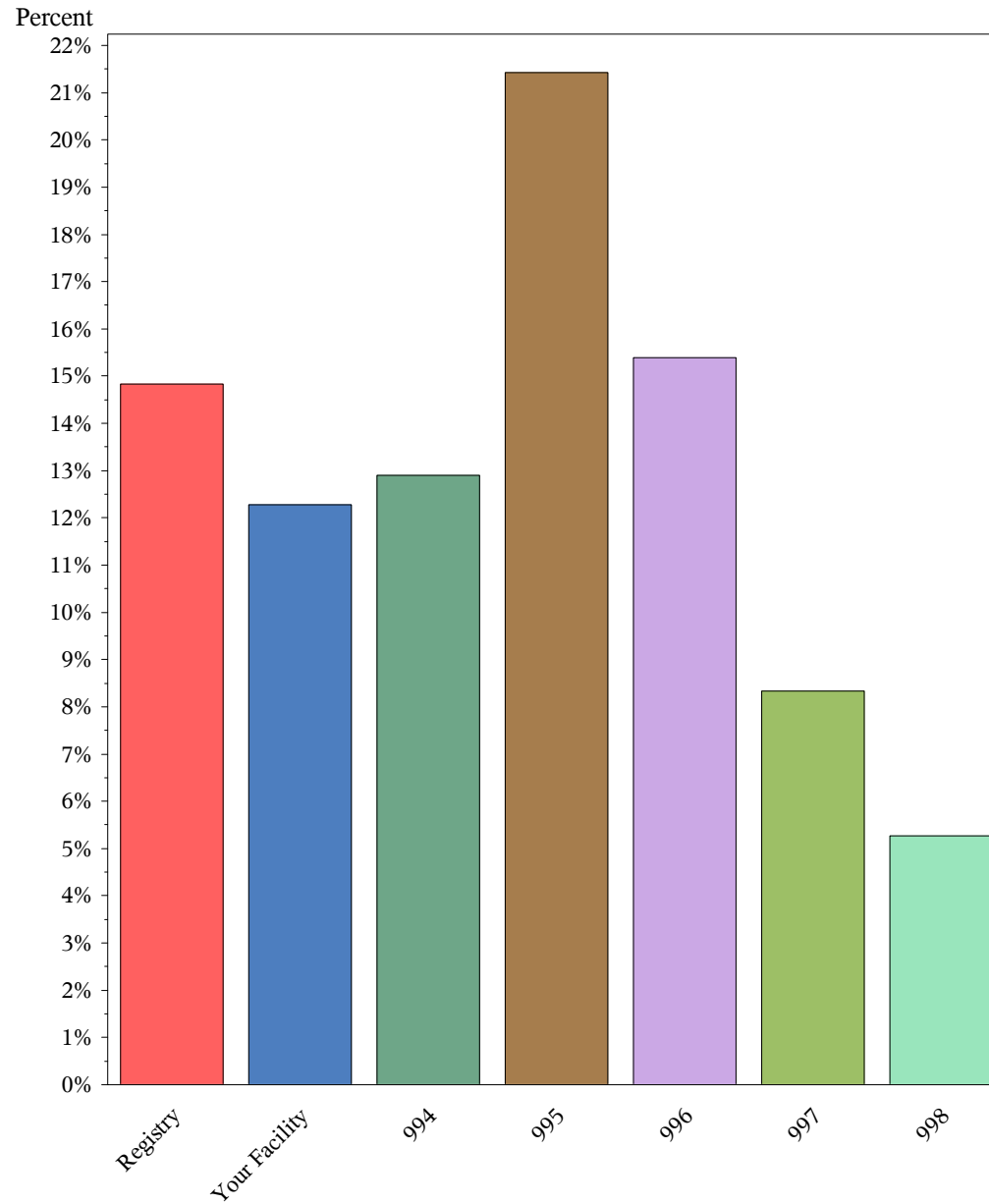
CT Colonography
Jan 2021 - Jun 2021
Rate of Colonic Perforation



CT Colonography
Jan 2021 - Jun 2021
True Positive Rate



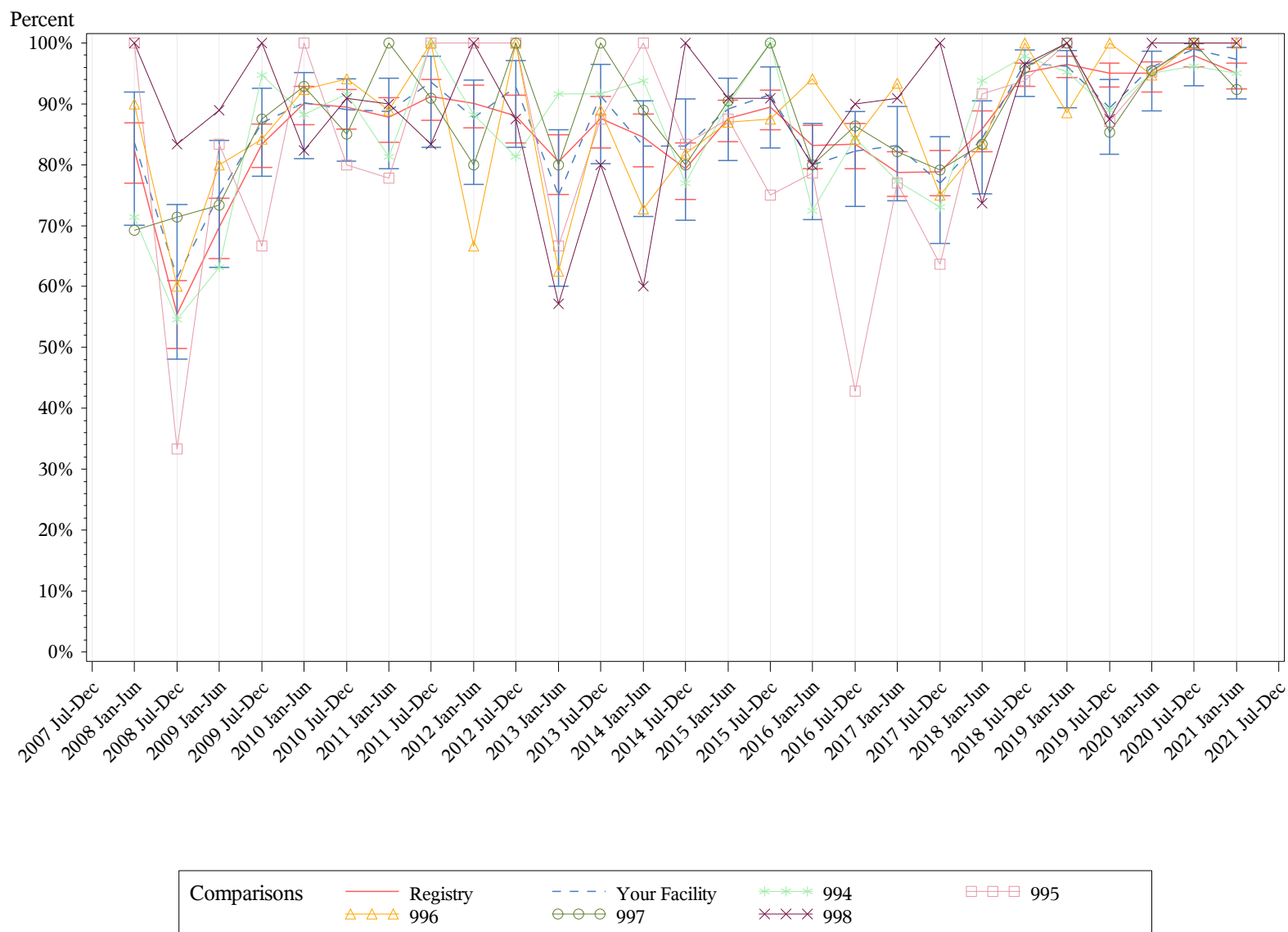
CT Colonography
Jan 2021 - Jun 2021
Potentially Important Extracolonic Findings



CT Colonography

Jan 2021 - Jun 2021

Comparison Chart: Rate of Adequacy of Screening CTC Exam

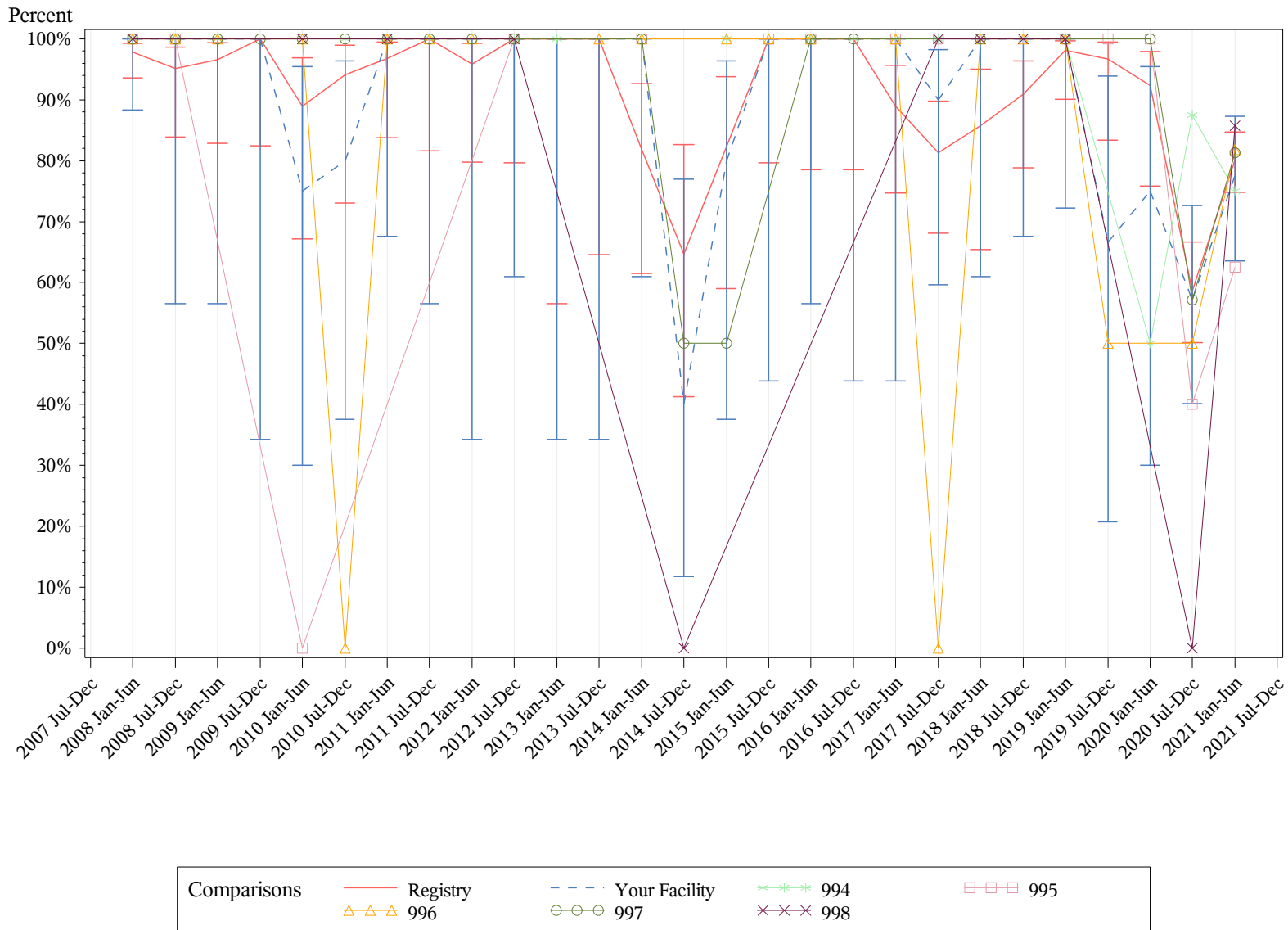


¹For exams submitted before October 7, 2008, screening adequacy rates were calculated using collimation and kVp, effective mAs and quality reference mAs. For exams submitted on or after October 7, 2008, screening adequacy rates were calculated using CTDIvol.

CT Colonography

Jan 2021 - Jun 2021

Comparison Chart: Rate of Adequacy of Diagnostic CTC Exam

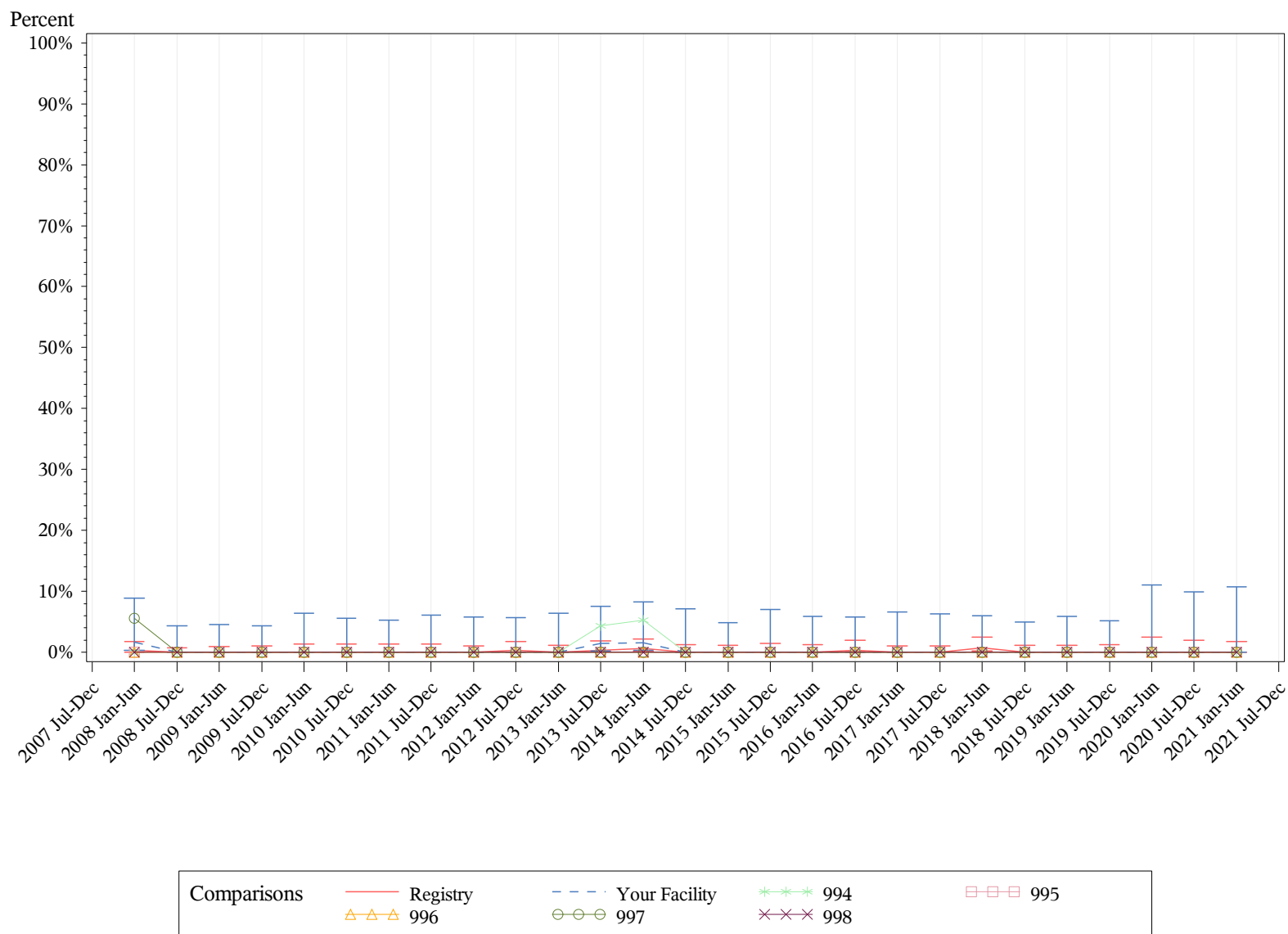


¹For exams submitted before October 7, 2008, diagnostic adequacy rates were calculated using collimation and kVp.

CT Colonography

Jan 2021 - Jun 2021

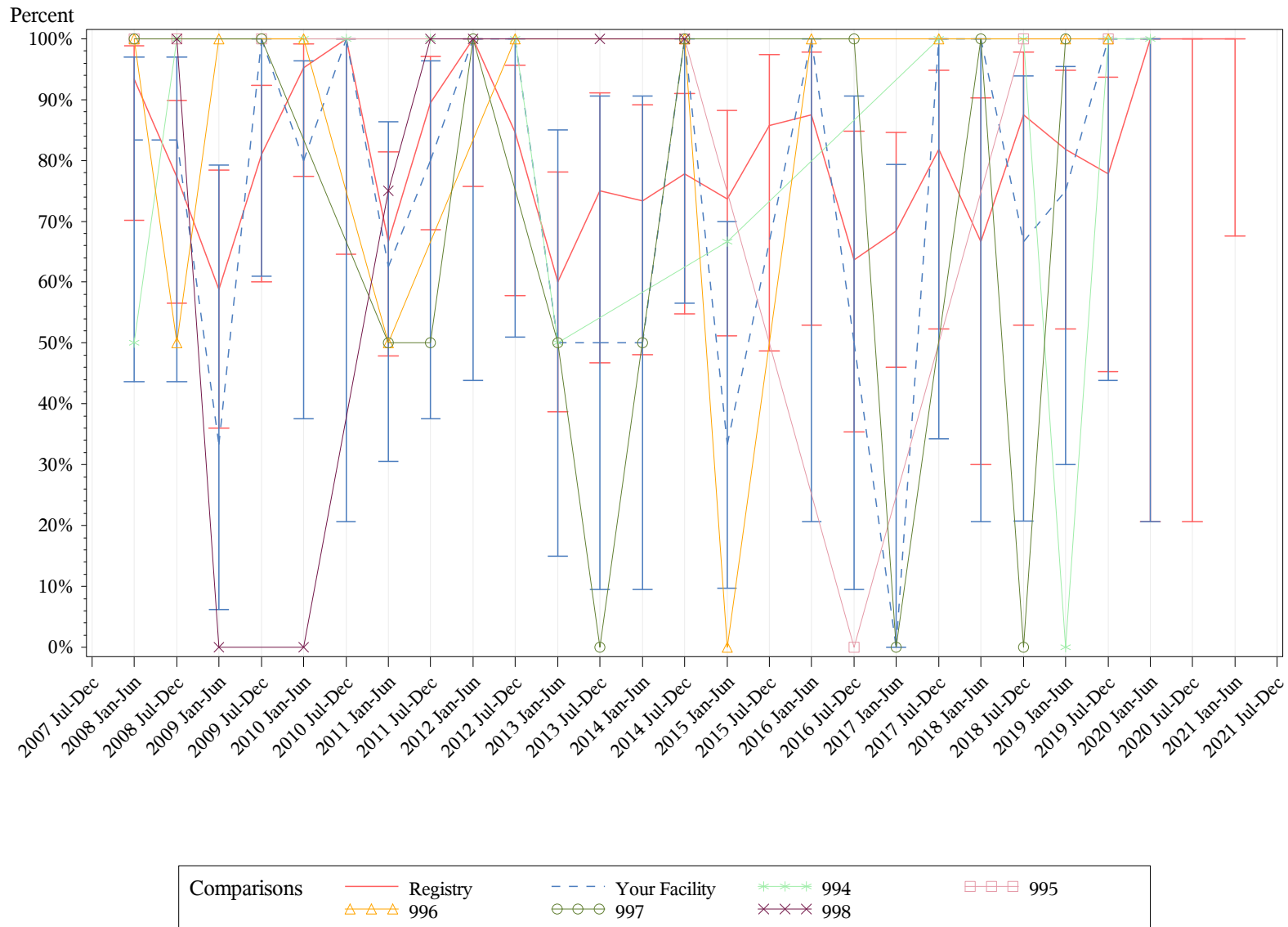
Comparison Chart: Rate of Colonic Perforation



CT Colonography

Jan 2021 - Jun 2021

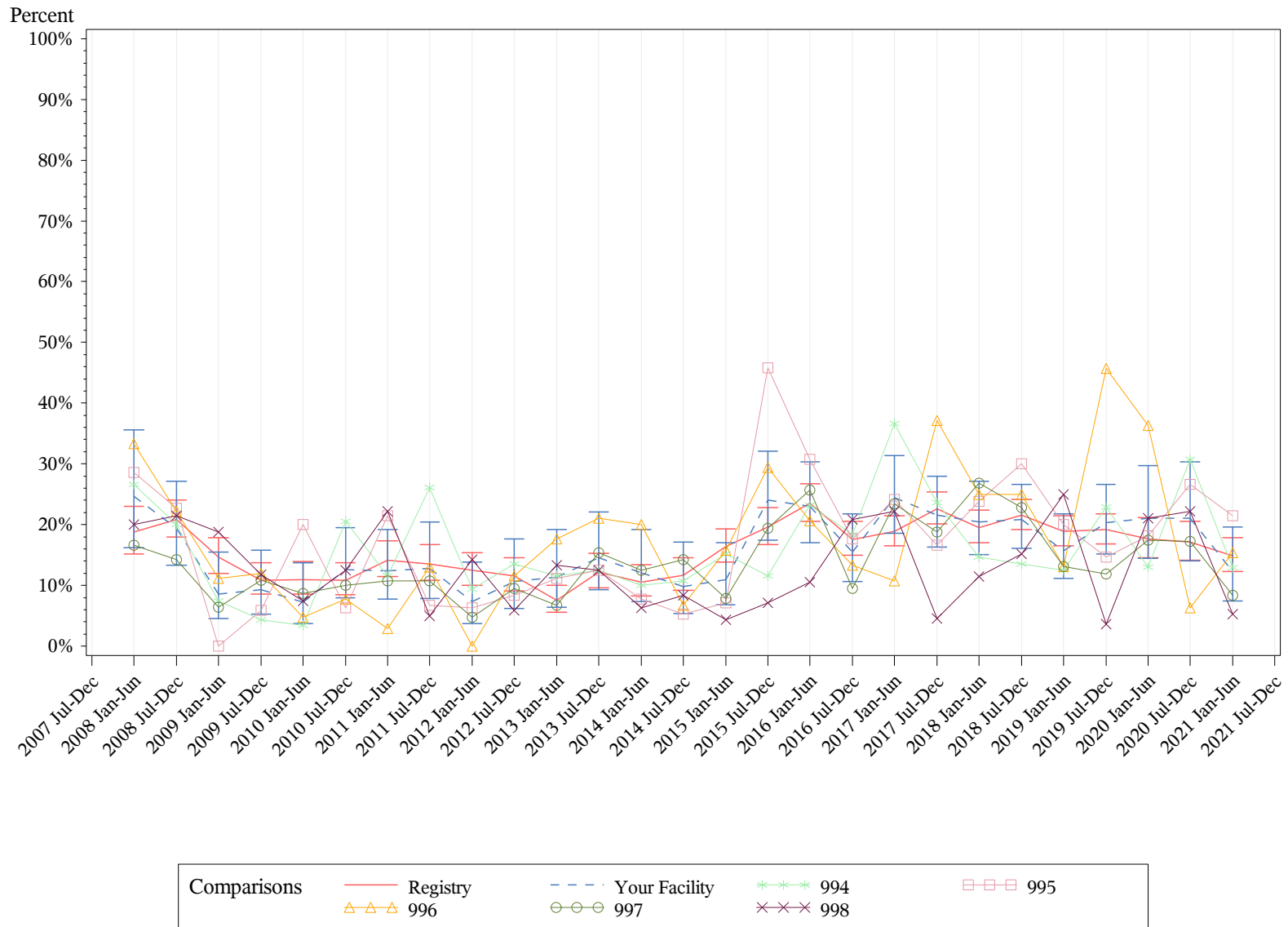
Comparison Chart: True Positive Rate



CT Colonography

Jan 2021 - Jun 2021

Comparison Chart: Potentially Important Extracolonic Findings



This page is intentionally blank.

Promote your participation in NRDR™!
Download your marketing toolkit today.

acr.org/CTCtoolkit

CONTACT US

1.800.227.5463, ext. 3535
nrdre@acr.org | nrdre.acr.org

