

National Radiology Data Registry

Facility Report, 2021 Jan-Mar

Sample facility
(Facility ID: 100853)



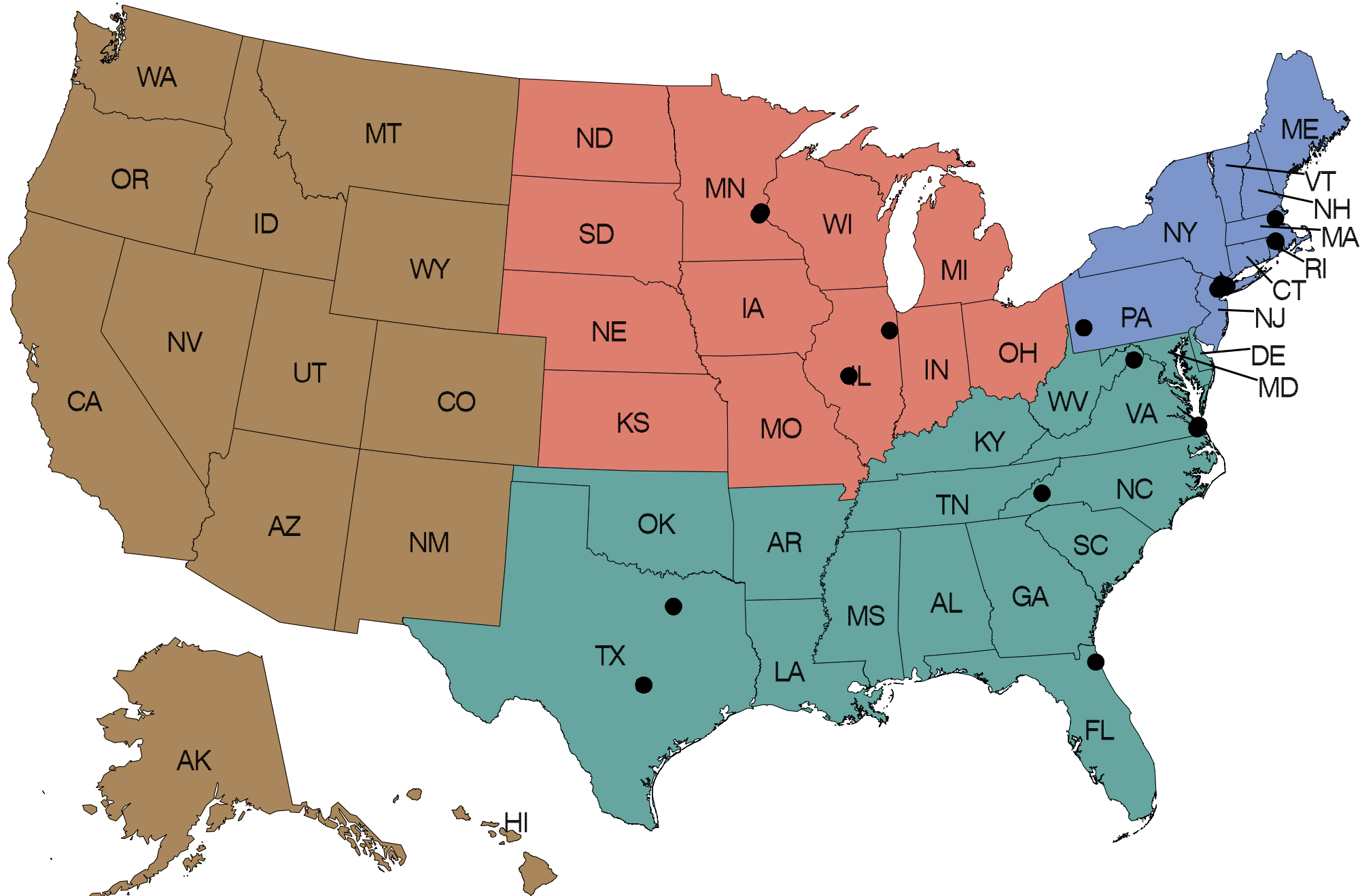
nrdr.acr.org



This page is intentionally blank.

CT Colonography Registry

Jan 2021 - Mar 2021



Black dots indicate CTC participating facilities

Census Region

 Northeast

 Midwest

 South

 West

CT Colonography Registry
Jan 2021 - Mar 2021
Summary Table - Sample facility

	2021						2020		
	Your Facility (100853)			Registry			Registry		
Measure	Num ¹	Den ²	%	Num ¹	Den ²	%	Num ¹	Den ²	%
Rate of Adequacy of Screening CTC Exam	42	46	91.3	223	230	97.0	953	987	96.6
Rate of Adequacy of Diagnostic CTC Exam	32	34	94.1	129	138	93.5	115	184	62.5
Rate of Colonic Perforation	0	19	0.0	0	95	0.0	0	344	0.0
True Positive Rate	1	1	100	2	2	100	2	2	100
Potentially Important Extracolonic Findings	10	67	14.9	37	316	11.7	180	1,034	17.4

Table of CTDIvol - Sample facility

Your Facility (100853)		CTC Registry	
N	P25-Median-P75	N	P25-Median-P75
65	(3/10/12)	311	(5/10/12)

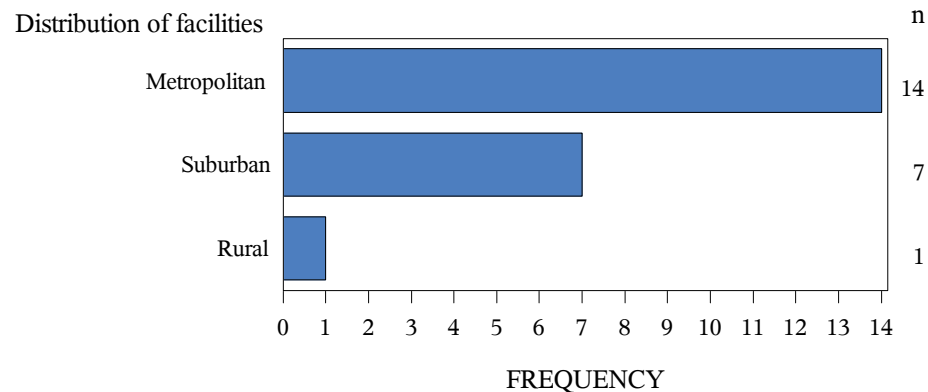
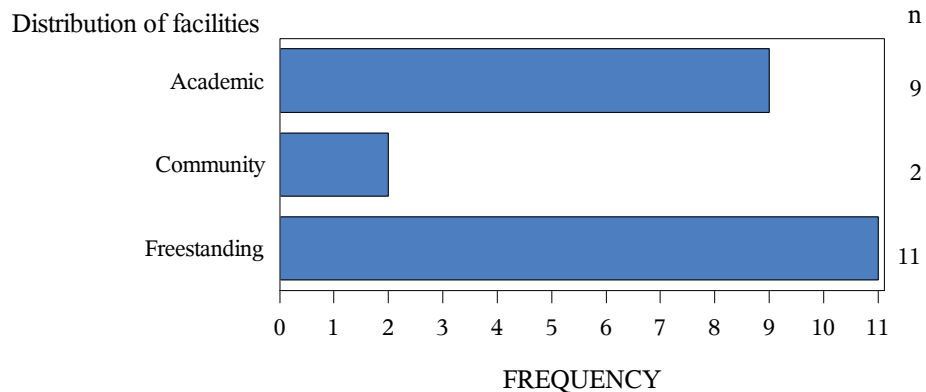
¹Num (Numerator): Instances

²Den (Denominator): Total number eligible for measure
Total # of cases in the CTC Registry= 115

CTC Facility Characteristics

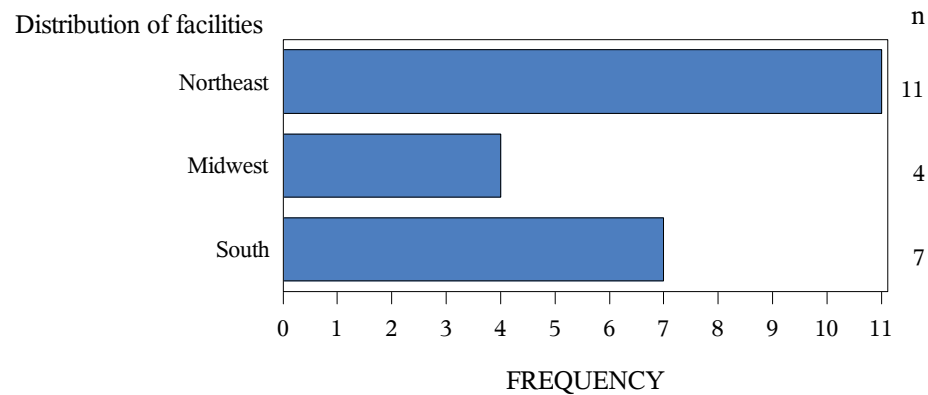
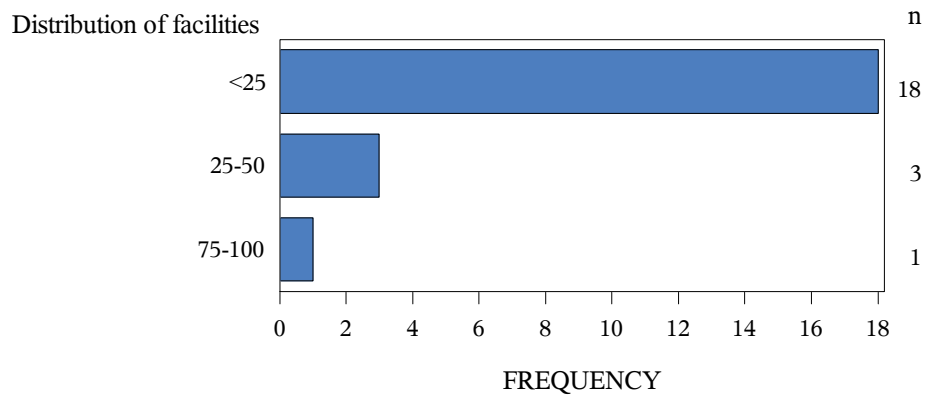
Facility type
Sample facility : &value_fmt.

Location
Sample facility : &value_fmt.



Number of exams
Sample facility : &value_fmt.

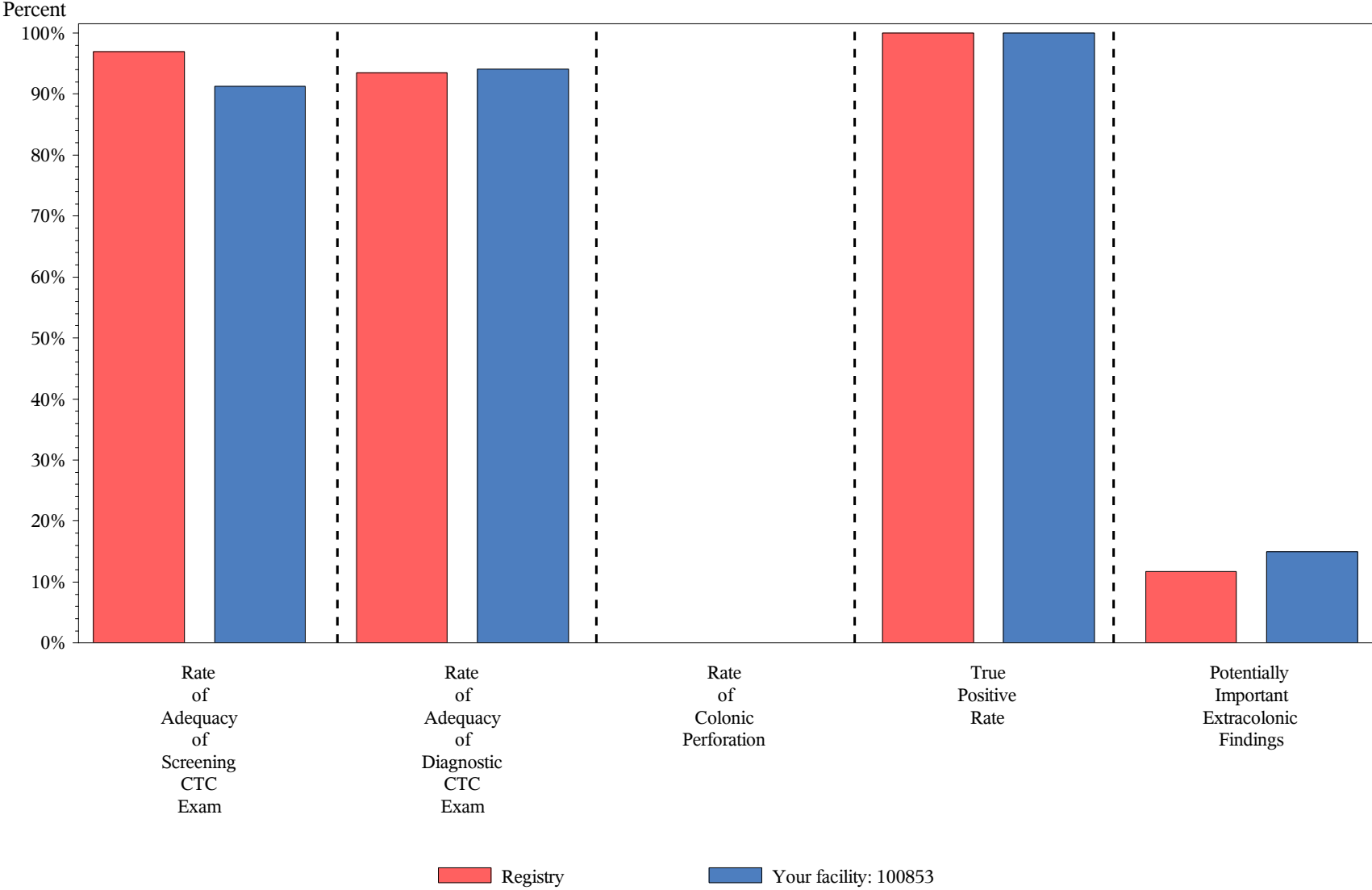
Census region
Sample facility : &value_fmt.



CT Colonography

Jan 2021 - Mar 2021

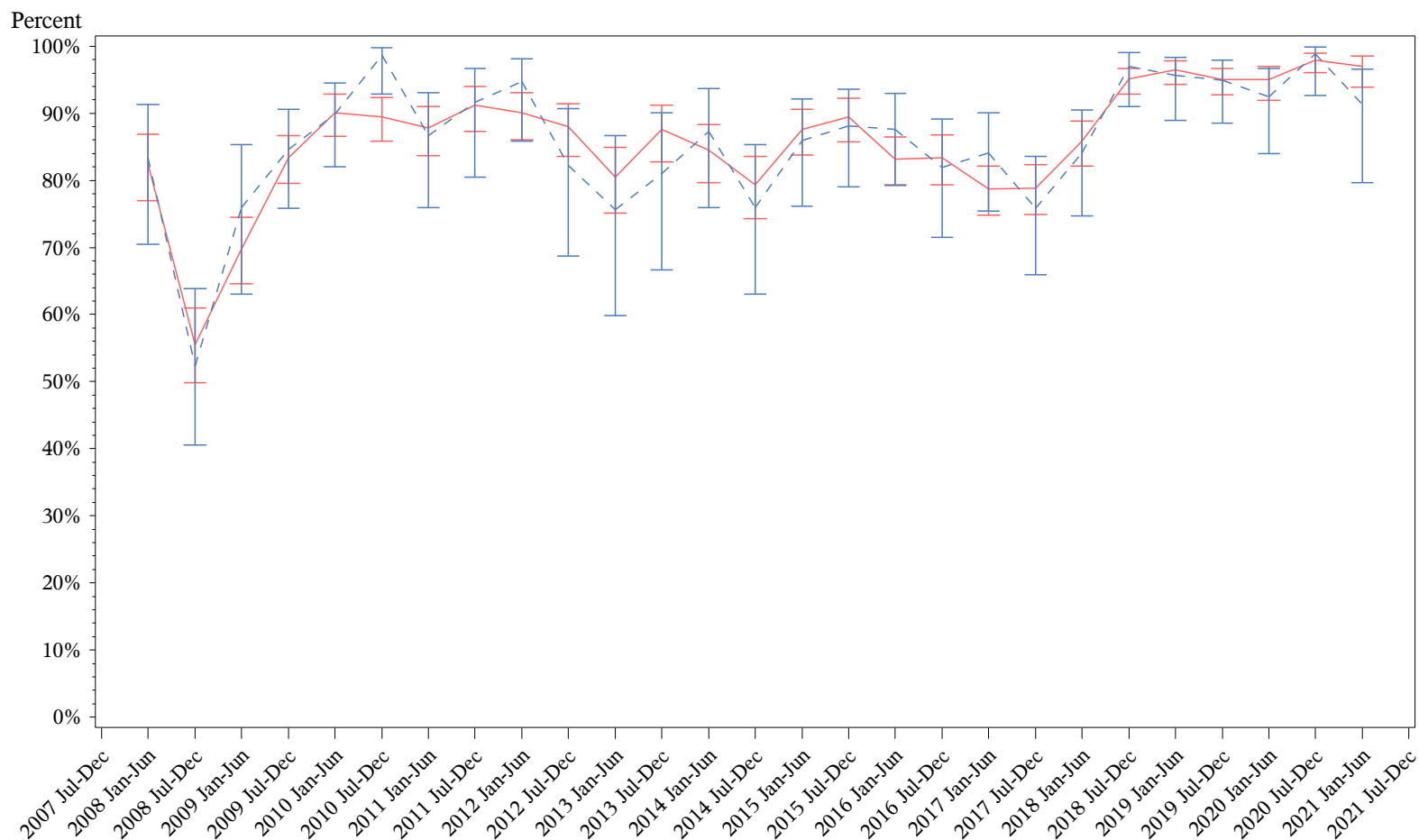
Summary Chart - Sample facility



CT Colonography

Jan 2021 - Mar 2021

Trend Chart: Rate of Adequacy of Screening CTC Exam



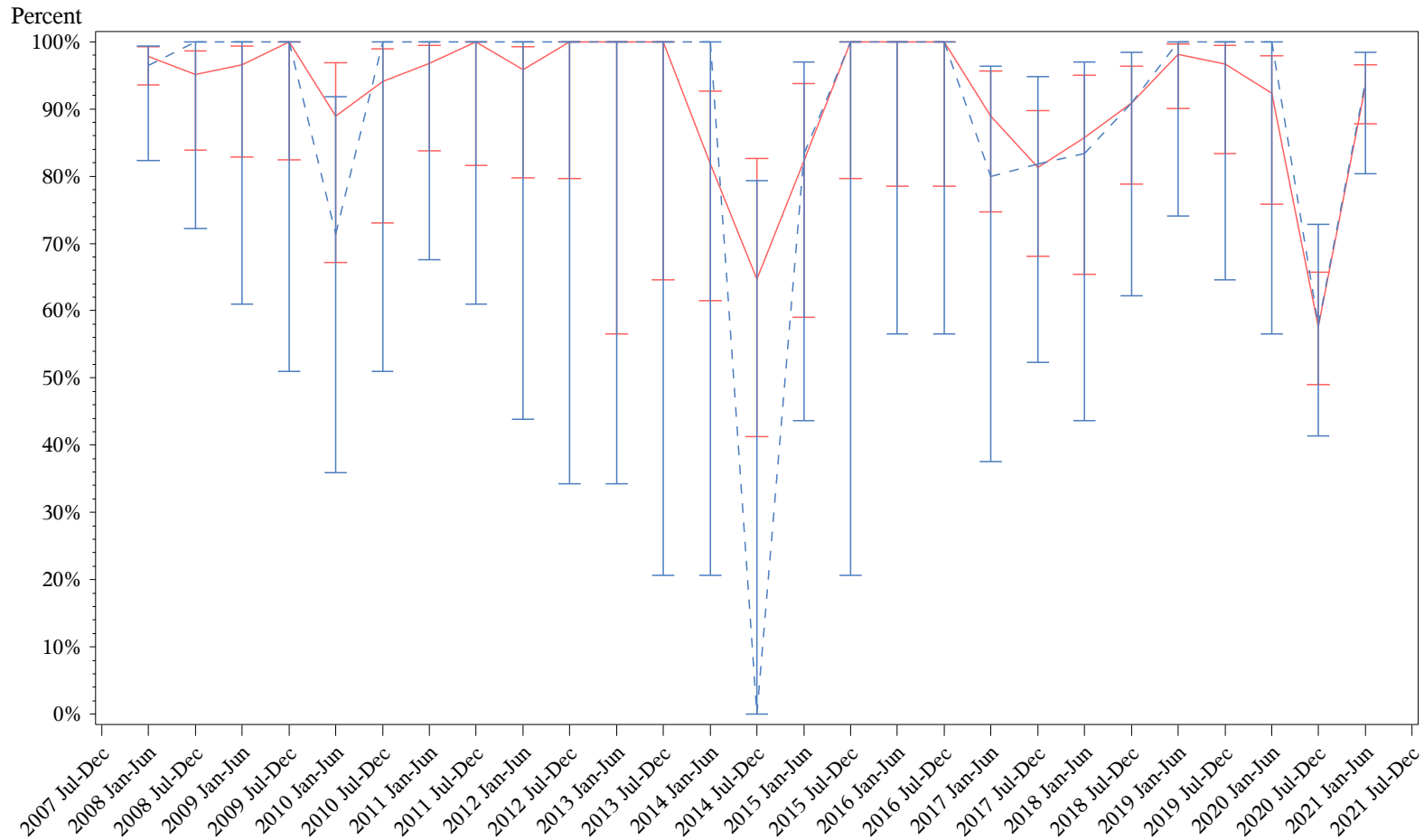
¹For exams submitted before October 7, 2008, screening adequacy rates were calculated using collimation and kVp, effective mAs and quality reference mAs. For exams submitted on or after October 7, 2008, screening adequacy rates were calculated using CTDIvol.

Comparisons — Registry - - - Your facility: 100853

CT Colonography

Jan 2021 - Mar 2021

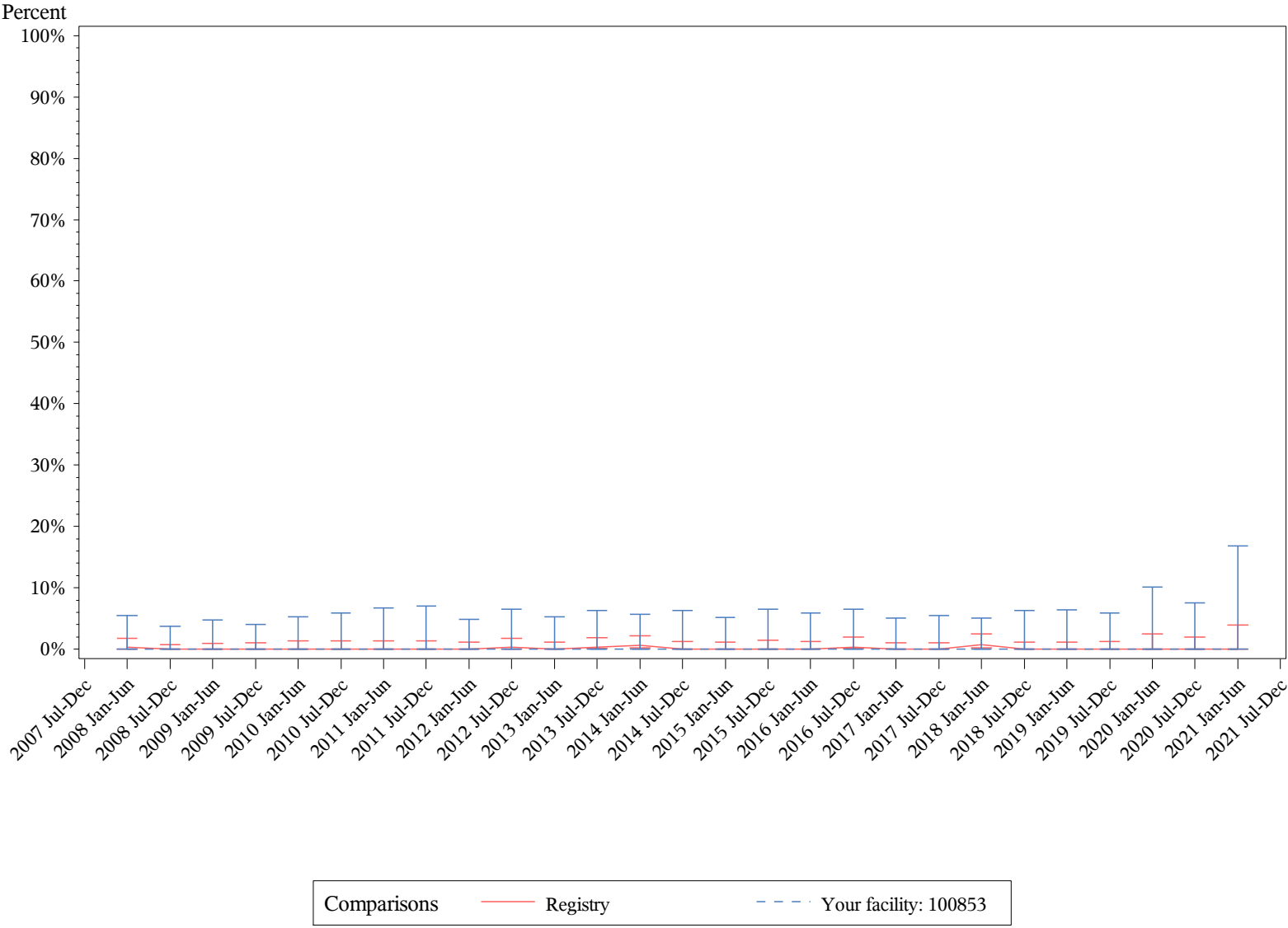
Trend Chart: Rate of Adequacy of Diagnostic CTC Exam



*For exams submitted before October 7, 2008, diagnostic adequacy rates were calculated using collimation and kVp.

Comparisons Registry Your facility: 100853

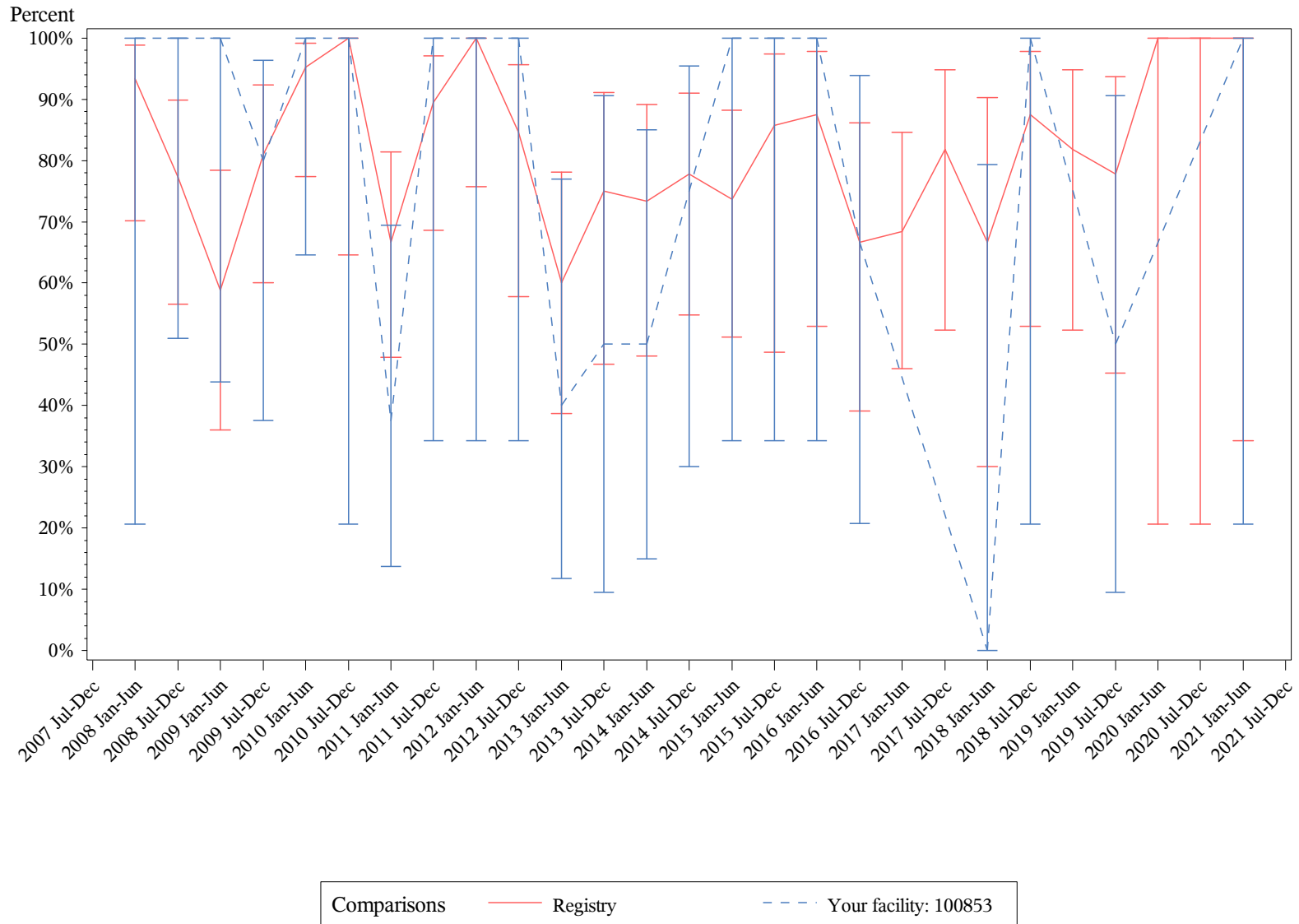
CT Colonography **Jan 2021 - Mar 2021** **Trend Chart: Rate of Colonic Perforation**



CT Colonography

Jan 2021 - Mar 2021

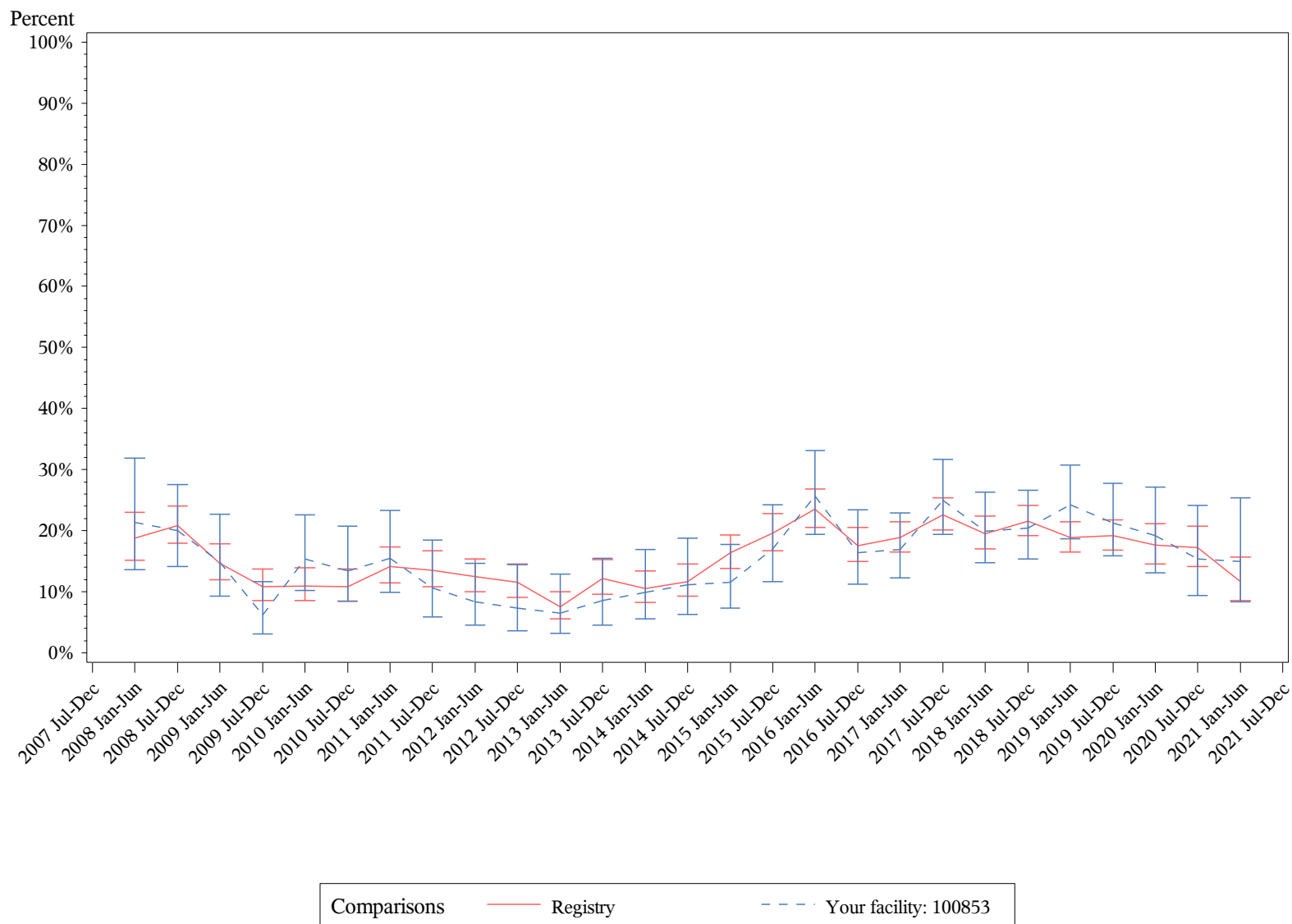
Trend Chart: True Positive Rate



CT Colonography

Jan 2021 - Mar 2021

Trend Chart: Potentially Important Extracolonic Findings



This page is intentionally blank.

Promote your participation in NRDR™!
Download your marketing toolkit today.

acr.org/CTCtoolkit

CONTACT US

1.800.227.5463, ext. 3535
nrdn@acr.org | nrdn.acr.org

